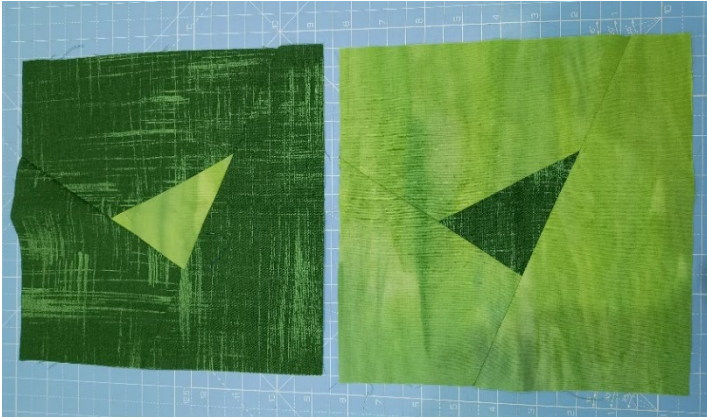


Q4CL Block of the Month – August 2024 – *wonky* Triangles



This month, we'd like you to go all wonky – on purpose!

No seams to match and almost no wasted fabric.

The aim is for a very modern look.

All fabrics should be nearly solid with no obvious print or pattern. These would be great choices:

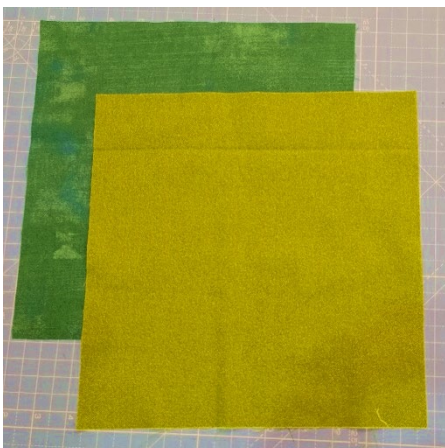


Please stick to the clear and bright shades, avoid the pink, red, orange, yellow part of the colour wheel and save the muddy, sage and khaki greens and greyish blues for another month - thank you. You will need two different value fabrics in the same colour family.

Contact Lynne if you need help with fabric.

Fabric type

Please do not use anything other than quilting weight cotton fabric i.e. no curtaining, stretch, suiting or upholstery fabrics. We are also unable to use blocks that include licensed fabrics.



The starting point to make two blocks is two 10" squares.

Step 1 Choose two fabrics in the same **bright** colour family (ie **BOTH purple** or both **turquoise** NOT one of each).

Make sure there is a good contrast of value (light and dark) between the two. You can check this by taking a black and white photo to make sure that there is a good difference between the two shades of grey.

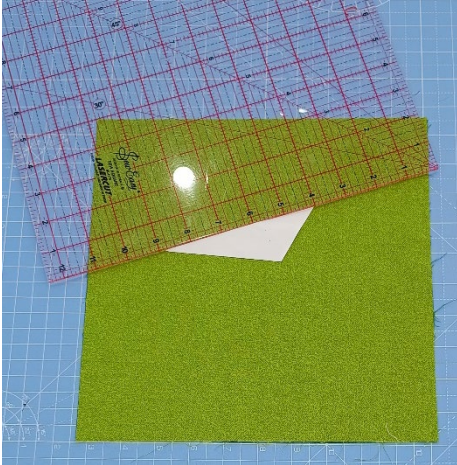


Step 2 Make a paper template of an irregular triangle (all 3 sides of a different length).

The longest side must be at least 4.5" and no longer than 6".

The shortest side needs to be at least 1.5" long.

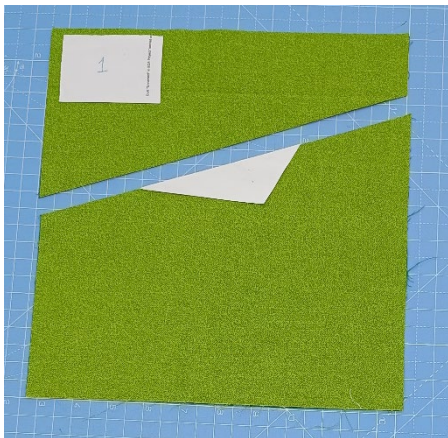
It could be a slender sliver of a triangle or quite plump but not a regular equilateral or right-angle triangle – those just don't really look wonky... There are some example triangles at the end of these instructions which you could print and cut out.



Step 3 Place the two fabrics on top of each other both rights side up.

Put the triangle template on top of the fabric making sure that no part of the template is within 1.5" of the edge of the fabric.

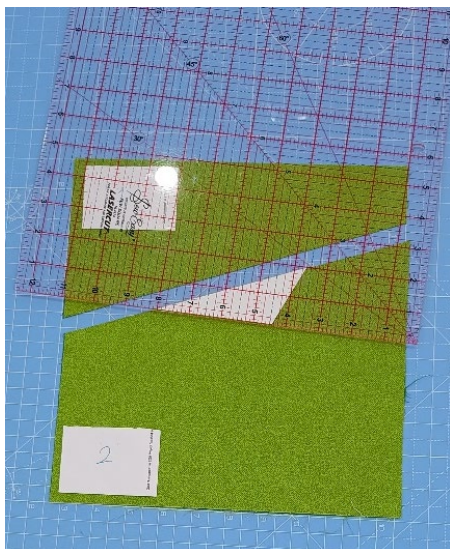
The triangle can be near a corner, close to one side or approximately central as long as it is at least 1.5" away from any edges 😊. We want blocks with lots of negative space.



Step 4 Line up a ruler on top of one side of the triangle template so that the ruler extends beyond both edges of the stacked fabric squares.

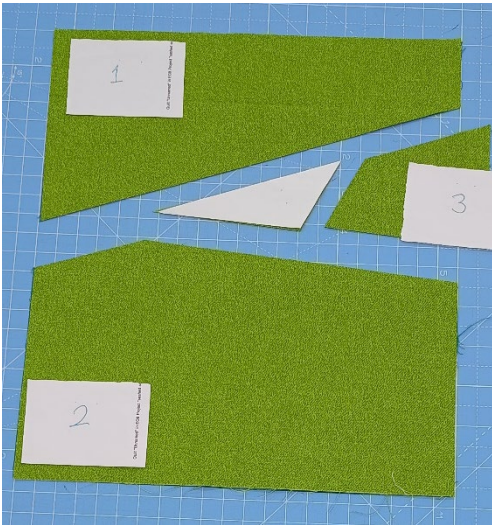
Cut along this line and move this first section of fabric away (just far enough so that it won't be in the way of your next cut).

Make sure that you keep it orientated the same way around. Label it as section 1.



Step 5 Position the ruler along a second side of the triangle and cut off a second section from the remains of the 10" squares.

Move this second cut section away too and keep it in the same orientation. Label it as section 2.

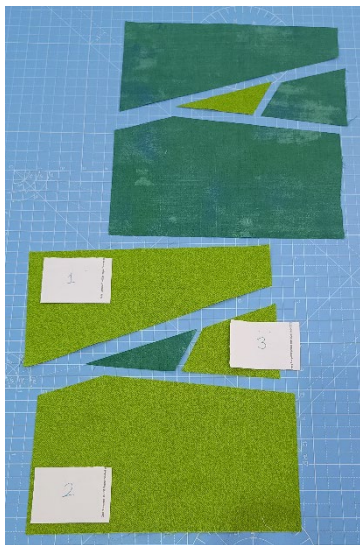


Step 6 Place the ruler along the third side of the template.

Cut off a third section of the fabric and move it away a little.

You should now have a central triangle and 3 other pieces surrounding it.

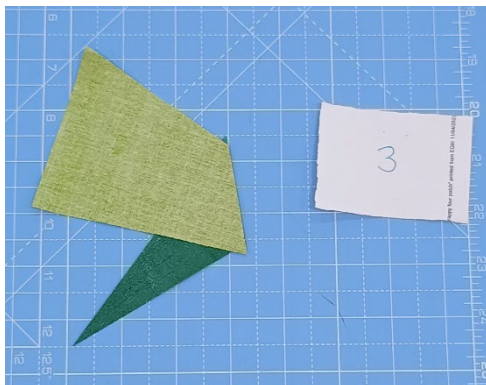
The paper labels are needed because to reassemble the block you'll need to sew seams in the reverse order.



Step 7 Swap the central triangle layers over, keeping them in the same orientation and then separate the top and bottom layers into two separate block kits.

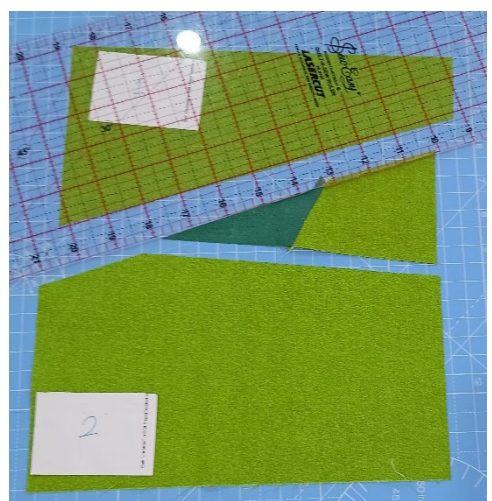
Each kit should have a contrasting triangle surrounded by 3 matching "background" fabric pieces.

One kit should be a dark triangle with a light background and the other should be a light triangle with a dark background.



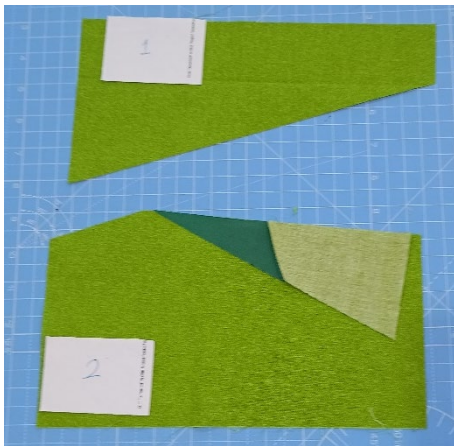
Step 8 Pick the third/last section of background fabric which you cut and match the cut edge with the corresponding side of the triangle - right sides together.

Sew with a ¼" seam taking care not to stretch the pieces – these are all bias edges and liable to develop a gentle curve...




Press towards the dark fabric.

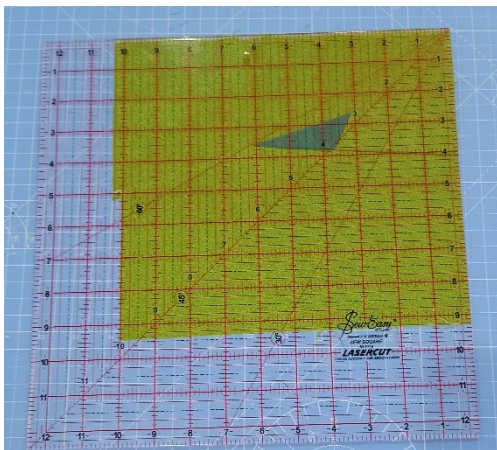
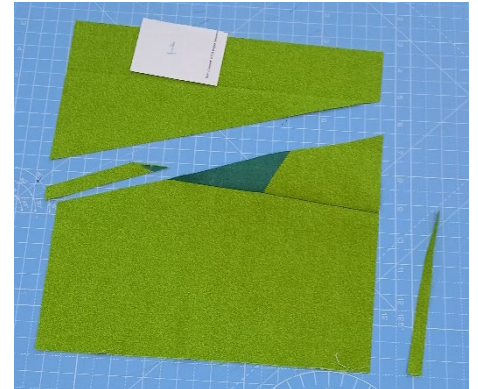
Trim two edges of the background fabric in line with the corresponding sides of the triangle.



Step 9 Now take the second background section you cut and lay it on the matching side of the triangle.

Try to minimise steps in the outside edge of the square by positioning the two sections so that when the $\frac{1}{4}$ " seam is flipped over and pressed flat the outside edge of the square will be in line (or as close as possible) – this will help to yield the biggest possible finished block.

Sew the second background piece to the previously sewn section. Press and trim the edges of the background fabric level with the remaining triangle side. See picture to the right. 



Use the same method to join the section 1 background piece. Trim to a 9" square. Now repeat to assemble the second block.

NB. If your blocks are smaller than 9", please still send them UNTRIMMED. They will all find some friends and become a hug.

I hope you enjoy making these blocks. Thank you!

Postage. Please carefully check the postage. Cost depends on size, weight and thickness of the envelope. A standard stamp only covers 100g, 0.5cm thick letter. A large letter stamp only covers up to 100g. For anything heavier than 100g you need a different stamp. Underpayment incurs penalty charges (currently around £1.50 per parcel) which stack up quickly. If in doubt, please check at the post office.

PS. Some example triangles are on the next page if you prefer not to "freestyle" your wonkiness!

