

NI May 2025

X Stripe Block

Before you get started, please carefully read through all the fabric requirements and the method.

FABRIC TYPE

Please use only quilting-weight cotton fabric, i.e., no curtaining, stretch, suiting, or upholstery fabrics. We are also unable to use blocks that include licensed fabrics.

COLOUR CHOICE

You'll need 6 fabrics, light to dark, from one of the colour families on the colour wheel. (If you have leftover Jelly Roll strips, they come in handy for this.)

Please use solid fabrics or fabrics that read as solid, e.g. blenders.

Examples



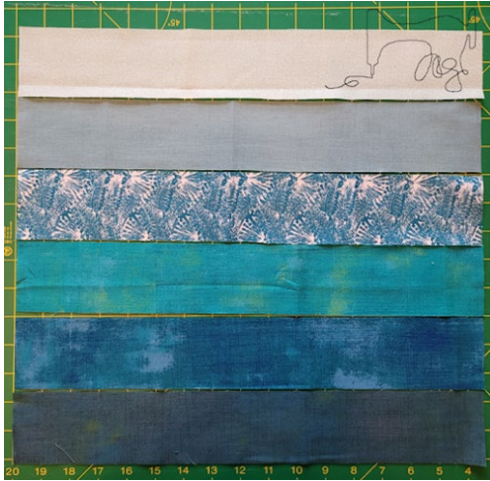
CUTTING INSTRUCTIONS

One 2 ½" x 16 ½" Strip from each of the 6 colours

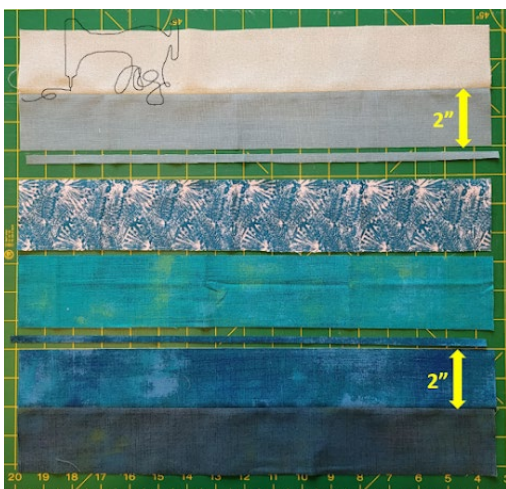
METHOD

Use ¼" seam throughout.

1. Arrange the strips from light to dark

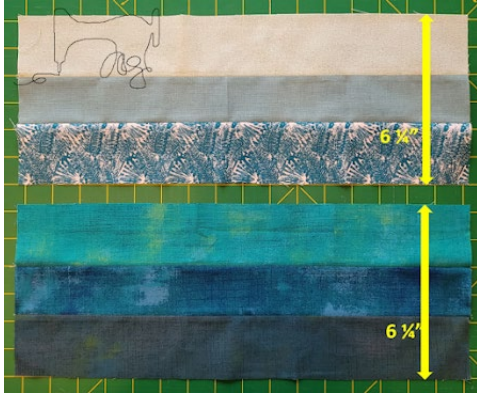


2. Sew the lightest to the second-lightest strip, right sides together. Press the seam open.
3. Sew the darkest to the second-darkest strip, right sides together. Press the seam open.
4. Take the lightest strip set: Trim the second-lightest strip to be 2" wide, measured from the seam.
5. Take the darkest strip set: Trim the second-darkest strip to be 2" wide, measured from the seam.

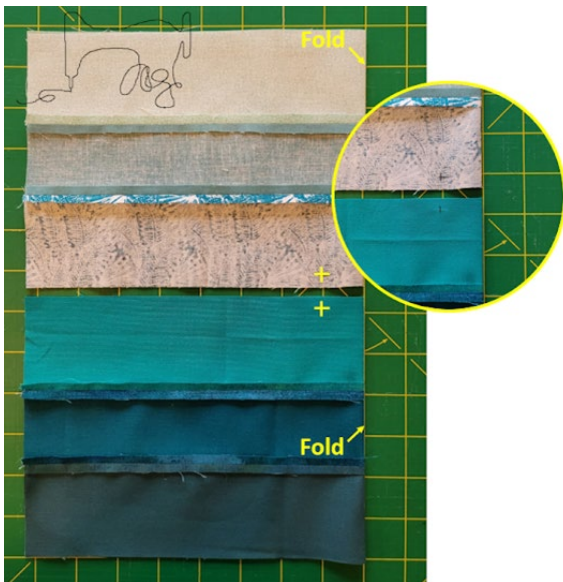


6. Take the lightest strip set: Sew the third-lightest fabric strip to the just-cut edge (to the second-lightest strip), right sides facing. Press the seam open.

7. Take the darkest strip set: Sew the third-darkest fabric strip to the just-cut edge (to the second-darkest strip), right sides facing. Press the seam open.
8. The strip sets should now be 6 ¼" wide each.



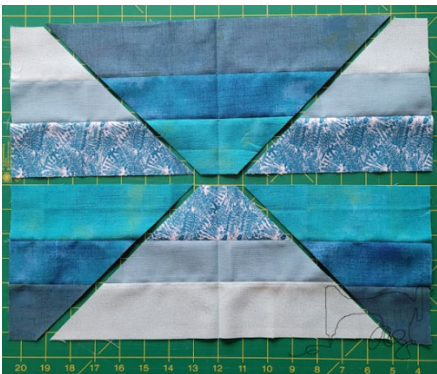
9. Press both Strip Sets in half width wise, with the right sides facing. Match up the seams so they lie on top of each other.
10. On the Light Strip Set: Mark a point 1" from the folded edge and ¼" from the edge of the darkest strip.
11. On the Dark Strip Set: Mark a point 1" from the folded edge and ¼" from the edge of the lightest strip.



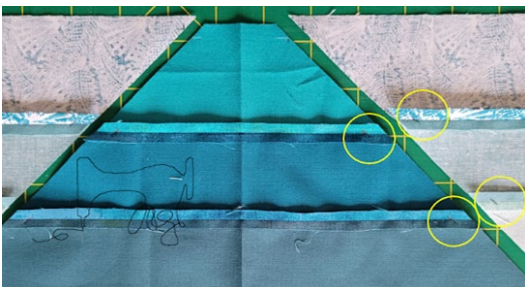
12. On both Strip Sets, make a 45-degree cut by aligning the 45-degree line of your ruler with the folded edge so that the cut goes through the marked point and angling away from the folded edge.



13. Open up your strip sets and arrange them as in the picture below. (You are swapping the middle parts.)



14. The easiest way to align the angled pieces for sewing them together is to mark the 1/4" seam allowance where the strip seams are, then pin the angled edges right sides together, matching up those marked points on the strip seams.





15. On Both Strip Sets, sew the side strip set pieces to the middle Strip set pieces, right sides together. Press seams open.



16. Sew the resulting strip sets together, so that the narrow sides of the middle pieces meet. Matching up the angled seams, sew the two strip sets together, right sides facing. Trim the 'dog ears'. Press the seam open.



17. Trim the resulting Block to 11 1/2" x 14 1/2", with the middle seam running horizontally and the points where the angled seams meet centred. It might help to crease the middle between those two points for this purpose.





POSTAGE

Please carefully check the postage – the cost depends on the envelope's size, weight and thickness. A standard stamp only covers 100g, 0.5cm thick letter. A large letter stamp covers up to 750g. For anything heavier than 100g, you'll need a different stamp. Underpayment incurs penalty charges (currently around £1.50 per parcel), which stack up quickly. Also, standard stamps without the barcode strips are no longer valid. Please don't use them, or penalty charges will be imposed by Royal Mail. If in doubt, please check at a post office.

Send to: