

January 2026

Mirror Mirror



Before you get started, please carefully read through all the fabric requirements and method. Also, please check that your sewing machine is sewing correctly i.e. the tension - make sure it's not gathering the fabric or that the base thread is lying on the fabric's surface.

FABRIC TYPE

Please use only quilting-weight cotton fabric, i.e., no curtaining, stretch, suiting, or upholstery fabrics. We are also unable to use blocks that include licensed fabrics.

COLOUR CHOICE

For each block, you need:

two shades of blue **or**
two shades of purple/lilac **or**
two shades of pink **or**
one black fabric and one grey fabric **or**
one black fabric and one red fabric

Please do not mix different colours in a single block. **No flowers, please, and no multicoloured prints.** Solids, tone-on-tones, blenders or fabrics that read like these would be good choices. Prints would be fine too, as long as they are predominantly the same colour as the other fabric in that block and paired with a plain fabric. Two busy fabrics will not work well together. If in doubt, please ask (either on the facebook group or via messenger).

CUTTING INSTRUCTIONS

Fabric 1 – 2 squares 5" x 5"

1 rectangle 8 ½" x 4 ½"

1 square 4 ½" x 4 ½"

Fabric 2 - 2 squares 5" x 5"

1 rectangle 8 ½" x 4 ½"

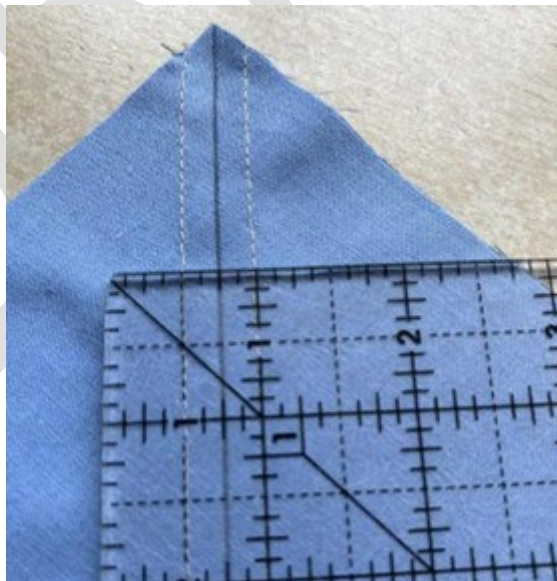
1 square 4 ½" x 4 ½"

NB: 3 of the 5" x 5" squares in each fabric will make sufficient HST pieces for 2 blocks.

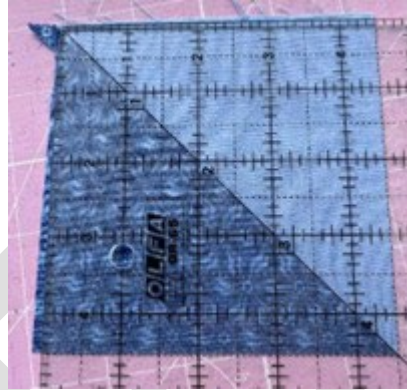
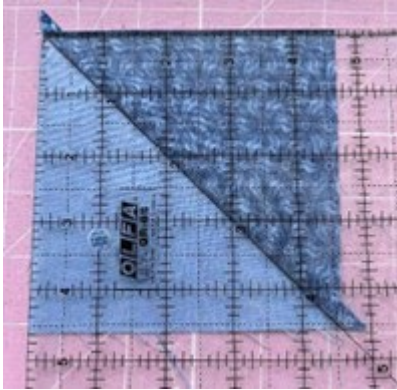
METHOD

This block is based on one in Tula Pink's City Sampler book
Use a ¼" seam throughout.

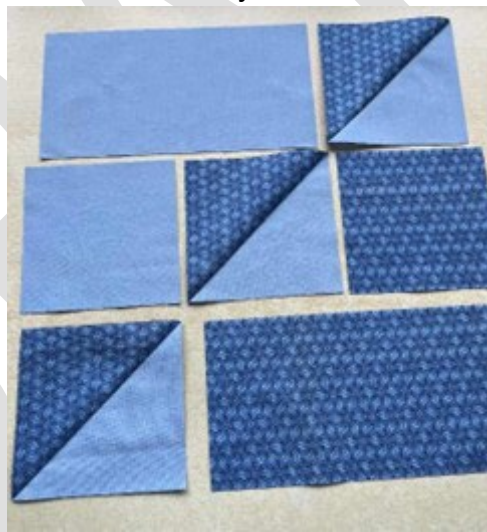
1. Place one of the fabric 1 squares and one of the fabric 2 squares right sides together and mark along one diagonal. Sew ¼" away from **each** side of the marked line. **IMPORTANT:** Check that there's ½" between the two lines of sewing. If there's only ¼" between the lines of sewing there won't be sufficient seam allowance once you cut along the diagonal and the blocks will be unusable.



2. Cut along the marked line.
3. Repeat with the other 5" x 5" squares.
4. Press to the dark side.
5. Trim each of the four resulting squares to 4½". If you line up the 45 degree mark on your ruler along the diagonal seam when you trim your square, this will help the points stay in the corner.



6. Sew the rows of the block together, following the picture and making sure to orient the HST squares the correct way.



7. Press the top and bottom rows towards the rectangle. Press the middle row towards the squares (not the HST pieces). This will help the seams nest nicely.
8. Sew the rows together, taking care to match the nesting seams. Press.
9. The resulting block should be 12½" square.

Hope you enjoy this block



POSTAGE

Please carefully check the postage – the cost depends on the envelope's size, weight and thickness. A standard stamp only covers 100g, 0.5cm thick letter. A large letter stamp only covers up to 100g. For anything heavier than 100g, you'll need a different stamp.

Underpayment incurs penalty charges (currently around £1.50 per parcel), which stack up quickly. Also, standard stamps without the barcode strips are no longer valid. Please don't use them, or penalty charges will be imposed by Royal Mail. If in doubt, please check at a post office.

Send to:

Address will be supplied on request