

## May 2026

Half Square Triangles (HST) - For this Block Drive, we will need 16 HSTs of the same colour combination, or 32 in total. The easiest way to make many of the same HSTs is to make 8 HSTs at a time.



**Before you get started, please carefully read through all the fabric requirements and method. Also, please check that your sewing machine is sewing correctly i.e. the tension - make sure it's not gathering the fabric or that the base thread is lying on the fabric's surface.**

### FABRIC TYPE

Please use only quilting-weight cotton fabric, i.e., no curtaining, stretch, suiting, or upholstery fabrics. We are also unable to use blocks that include licensed fabrics.

### COLOUR CHOICE

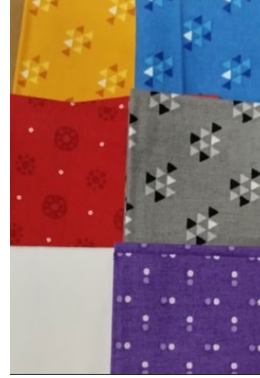
Colour combinations we are looking for would be the same colour in lighter and darker shades, as long as you can clearly see the difference between the fabrics. Any colours you like – reds, greens, browns, blues, pinks, yellows, ... The fabric can have patterns as long as the main colour is clear. You can take one solid fabric and one with a pattern. When looking at both fabrics in grayscale, one should be darker and the other lighter, but not like black-and-white; the difference should not be too drastic.

Another option: fabrics close in colour on the colour wheel, like red and orange, green and blue, or purple and red.

YES - the contrast difference is close, and colours are similar (looking at fabric pairs)



NO - the contrast is too great, or colours are too different (looking at fabric pairs)



## CUTTING INSTRUCTIONS

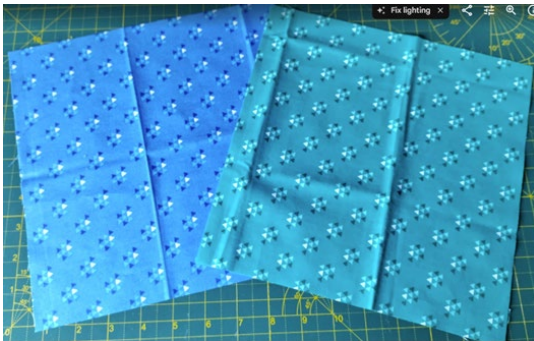
Fabric 1 10" square

Fabric 2 10" square

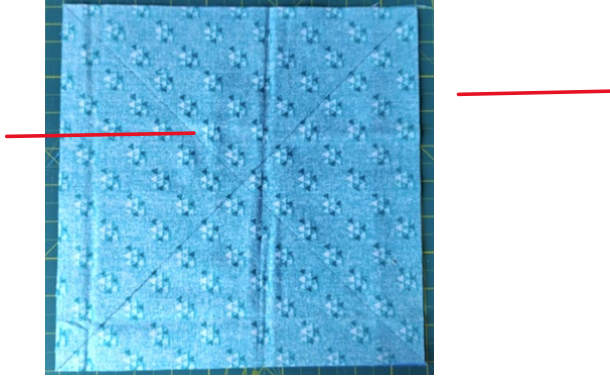
## METHOD

MAKING HALF-SQUARE TRIANGLES 8 AT A TIME:

1. Take the two 10" squares of fabric and put them right sides together.



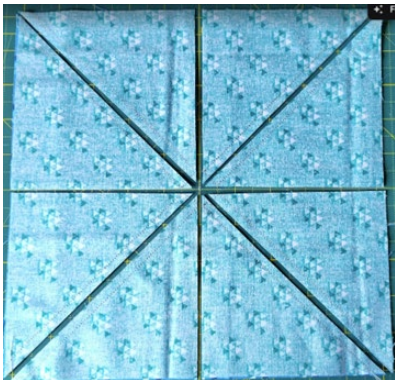
2. Draw 2 diagonal lines across the top fabric with a pencil, chalk or any other marker.



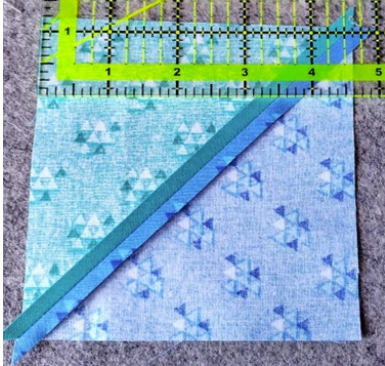
3. Sew  $\frac{1}{4}$ " on each side of the drawn lines and press.



4. Cut along the diagonal lines and through the vertical and horizontal centre lines. You now have 8 HSTs.



5. Please iron the HST seams open. The finished HST will be just over 4 ½ inches.



6. Cut the 'dog's ears' off



## POSTAGE

Please carefully check the postage – the cost depends on the envelope's size, weight and thickness. A standard stamp only covers 100g, 0.5cm thick letter. A large letter stamp only covers up to 100g. For anything heavier than 100g, you'll need a different stamp.

Underpayment incurs penalty charges (currently around £1.50 per parcel), which stack up quickly. Also, standard stamps without the barcode strips are no longer valid. Please don't use them, or penalty charges will be imposed by Royal Mail. If in doubt, please check at a post office.

## Send to:

Address will be supplied on request