

Q4CL BLOCK DRIVE NOVEMBER 2024

IMPROV QUARTER CIRCLES

This month's block is the first block drive to involve curved seams. If you haven't sewn curved seams before, don't be scared. The improv nature of the block means there's more room to manoeuvre than with traditional blocks that include curved seams, e.g., drunkard's path or double wedding ring block.

Due to the nature of the cutting out, you will be making a minimum of three blocks.

Before you get started, please carefully read through all the fabric requirements and method.

If you are new to curved seams, please consider doing a test run on scrap fabric first.

FABRIC TYPE

Please do not use anything other than quilting weight cotton fabric i.e. no curtaining, stretch, suiting or upholstery fabrics. We are also unable to use blocks that include licensed fabrics.

COLOUR CHOICE

For this month's block, the colours are mostly muted in order to provide more muted quilts that will complement the many colourful and bright quilts we receive.

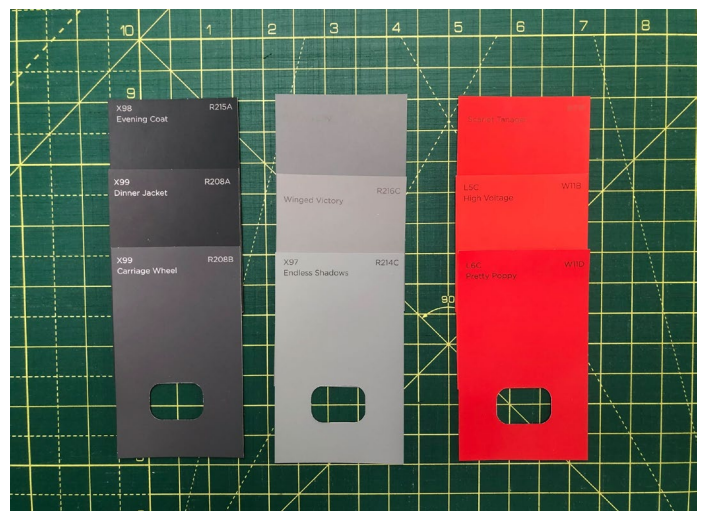
Think winter storms, muted, moody blues and greys with or without the addition of gold or red highlights.

Suitable types of colours are suggested below with paint colour cards and in the 'Yes Please' fabric choice photo.

Please choose from one of the following colour schemes:

Moody Blues with or without **Golden yellow**

Stormy Greys with or without **Red**



FABRIC CHOICE

Please use solids, tone on tone or blender type fabrics with no obvious motifs. Suitable tone on tone and blender type fabrics includes, but are not limited to, marbled and linen textures, Dimples, Grunge and Bumbleberries.

YES PLEASE

Solids, tone on tone or blenders with no obvious motifs.



NO THANK YOU

Please do not use fabrics with obvious patterns or discernible motifs, bright blues, or very pale fabrics.



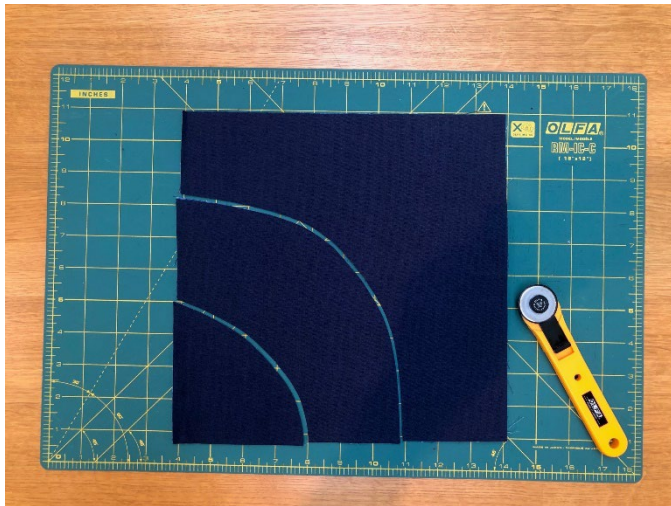
METHOD

1. If you are new to curved seams, please consider doing a test run on scrap fabric first.
2. Cut 3 x 10" squares using one of the following colour schemes:
 - 3 Moody Blues or
 - 2 Moody Blues + 1 Golden yellow or
 - 3 Stormy Greys or
 - 2 Stormy Greys + 1 Red

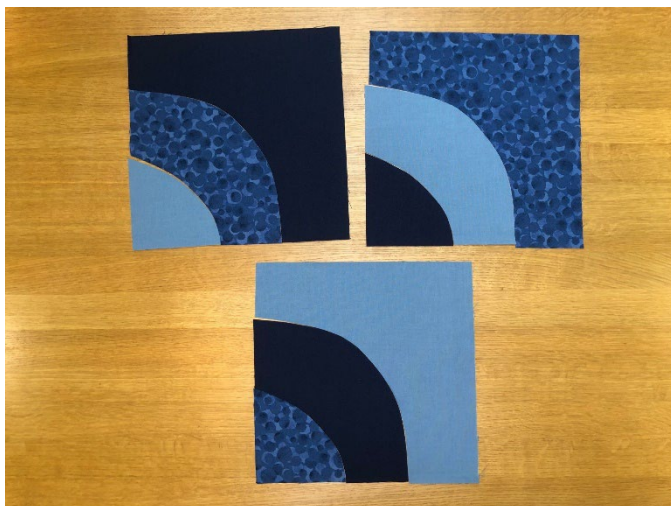
Please ensure that there is a good tonal contrast between the selected fabrics. Tip - if unsure about the tonal contrast take a black and white (mono) image of the fabrics and check that they are differentiated in terms of light and dark.



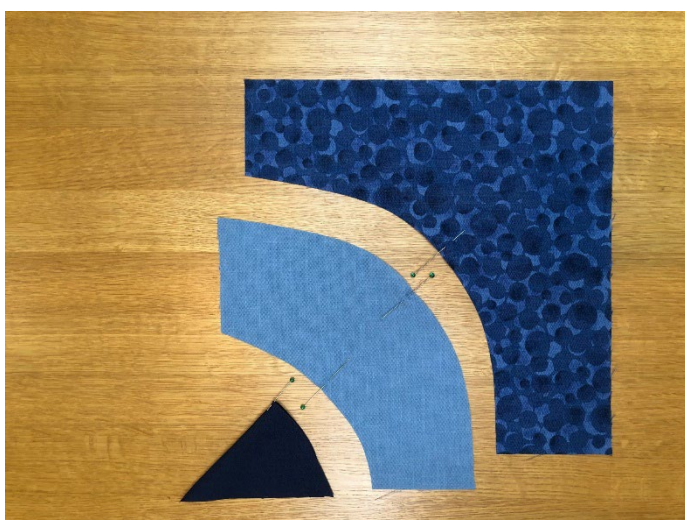
- Carefully stack the 3 squares on top of each other making sure the edges match.
- Using a rotary cutter cut 2 freehand curves through the three layers of fabric. Tip - cut slowly and carefully using a small, wheeled cutter if you have one.



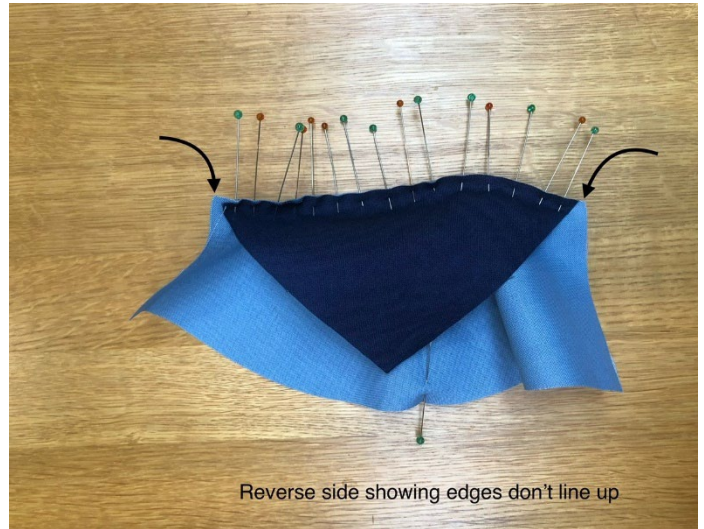
- Rearrange the pieces. Tip – if using solids or two-sided fabric, mark the “right” side to make it obvious which side to sew.



- Fold each piece in half, finger press and mark the centre of each curve with a pin.



7. Right sides together, match the centres of the two smallest pieces and pin. Pin the pieces together from the centre outwards being careful not to stretch the bias edges. Use plenty of pins and pin to encompass the $\frac{1}{4}$ " sewing line. Note - the edges of the pieces will not line up.



8. With the smaller piece on the bottom, sew the two pieces together using a generous $\frac{1}{4}$ " seam allowance. Tips - use a small stitch length, sew slowly easing out any tucks as you go.



9. Check that there are no tucks and that the seam allowance is at least $\frac{1}{4}$ ". If there are tucks or the seam allowance is less than $\frac{1}{4}$ ", please re-sew the seam. Press the seam allowance towards the smaller piece. Tip - finger press first.



10. Repeat steps 6 - 8 to add the third piece to the block.

FRONT SIDE



REVERSE SIDE



11. Your first block is finished. It will have wonky edges just like the photo above but don't worry!
Please do not trim. Repeat with the remaining pieces to make 2 further blocks.

POSTAGE

Please carefully check the postage – cost depends on size, weight and thickness of the envelope. A standard stamp only covers 100g, 0.5cm thick letter. A large letter stamp only covers up to 100g. For anything heavier than 100g, you'll need a different stamp. Under payment incurs penalty charges (currently around £1.50 per parcel) which stack up quickly. Also, standard stamps without the barcode strips are no longer valid. Please don't use them or penalty charges will be imposed by Royal Mail. If in doubt, please check at a post office.