

Double Hourglass



This block comes from the book '200 Quilt Blocks to Mix and Match' by Davina Thomas. I haven't seen it anywhere else.

You can either make a 6" block or a 12" block (or one or more of each) this month. The construction is the same.

Use a ¼" seam throughout.

Fabrics

For each block, choose from one of four colour schemes – greys **or** blues **or** greens **or** browns/beiges. Please do not mix different colours in a single block. We're aiming for more masculine, muted colours so **no flowers** please and **no bright prints**. Solids, tone-on-tones, blenders or fabrics that read like these would be good choices.

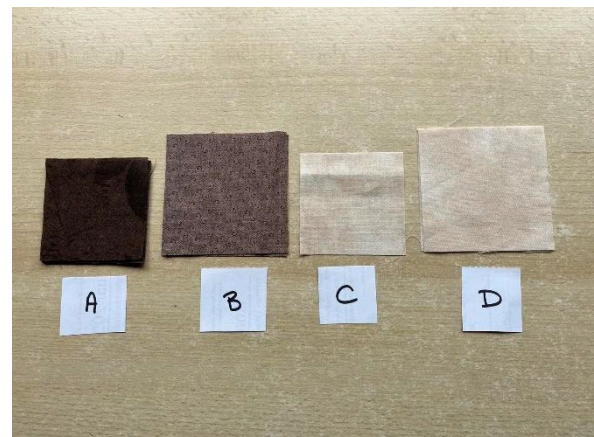
You'll need three shades of the same colour for each block – light, medium and dark – with enough contrast between the three to show up.

For the 6" block:

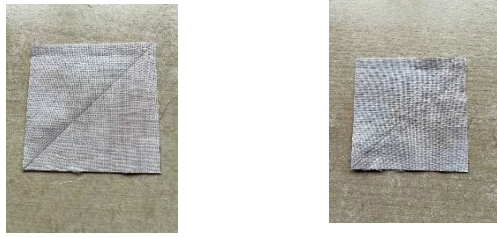
Dark fabric	4 squares 2.5" x 2.5" (A)
Medium fabric	2 squares 3" x 3" (B)
Light fabric	1 square 2.5" x 2.5" (C)
Light fabric	2 squares 3" x 3" (D)

For the 12" block

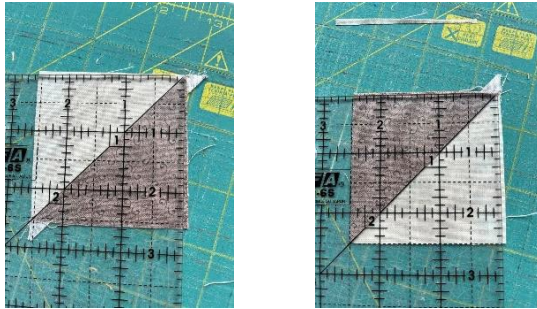
Dark fabric	4 squares 4.5" x 4.5" (A)
Medium fabric	2 squares 5" x 5" (B)
Light fabric	1 square 4.5" x 4.5" (C)
Light fabric	2 squares 5" x 5" (D)



1. Place one of the medium fabric squares (B) and one of the light fabric squares (D) right sides together and mark along one diagonal. Sew $\frac{1}{4}$ " away from each side of the marked line.



2. Cut along the marked line.
3. Repeat with the other medium fabric square (B) and light fabric square (D).
4. Press to the dark side (the medium fabric).
5. Trim each of the four resulting squares (to 2.5" if you're making the 6" block or 4.5" if you're making the 12" block). If you line up the 45 degree mark on your ruler along the diagonal seam when you trim your square, this should help the points stay in the corner.



6. Sew the rows of the block together, following the picture and making sure to orient the HST squares the correct way.



7. Press the top and bottom rows to the left. Press the middle row to the right. This will help the seams nest nicely.
8. Sew the rows together, taking care to match the nested seams. Press.
9. The resulting block should be either 6.5" or 12.5" square.