

Diamonds

Cut - One 6.5" Grey, black or white square (solid or tone on tone)

Two 9"x4" Brightly coloured rectangles of different fabrics.

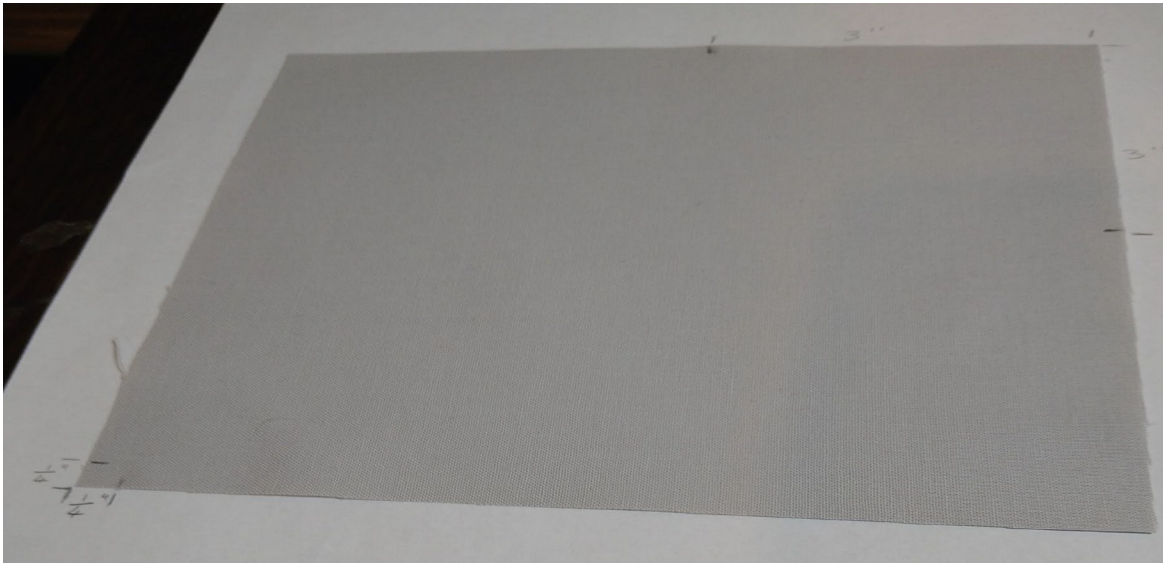
Please do not use brown or flowery fabrics.

Seam allowance is $\frac{1}{4}$ ".

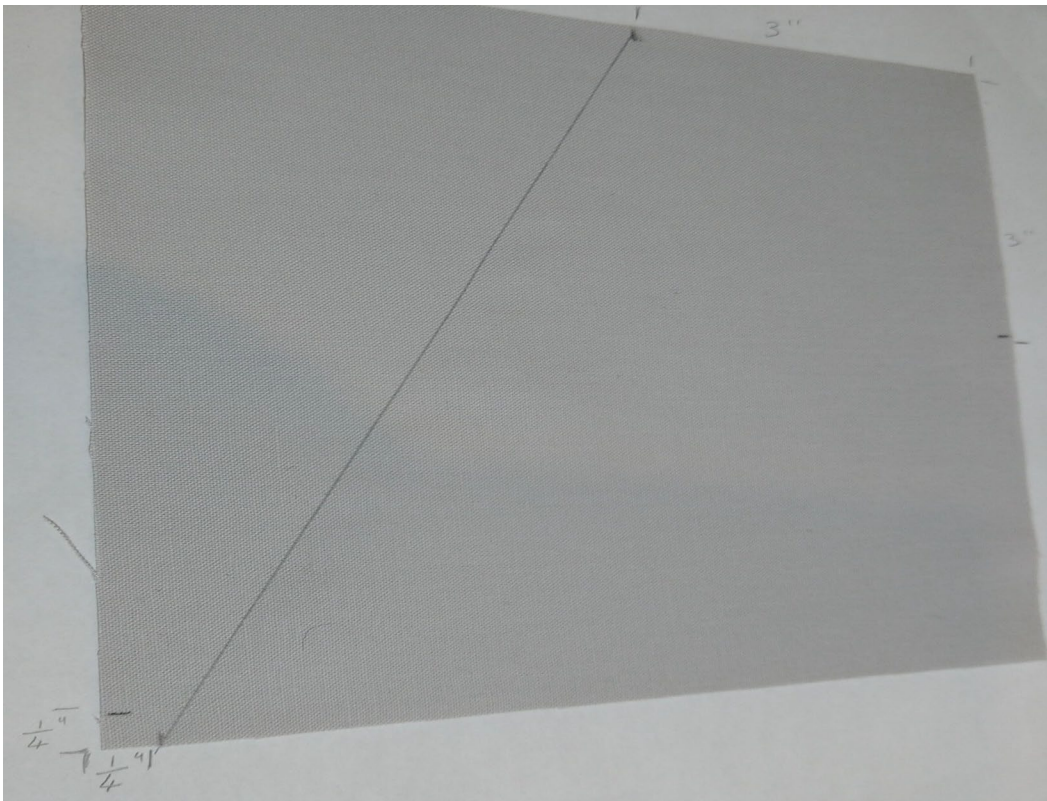
Sew

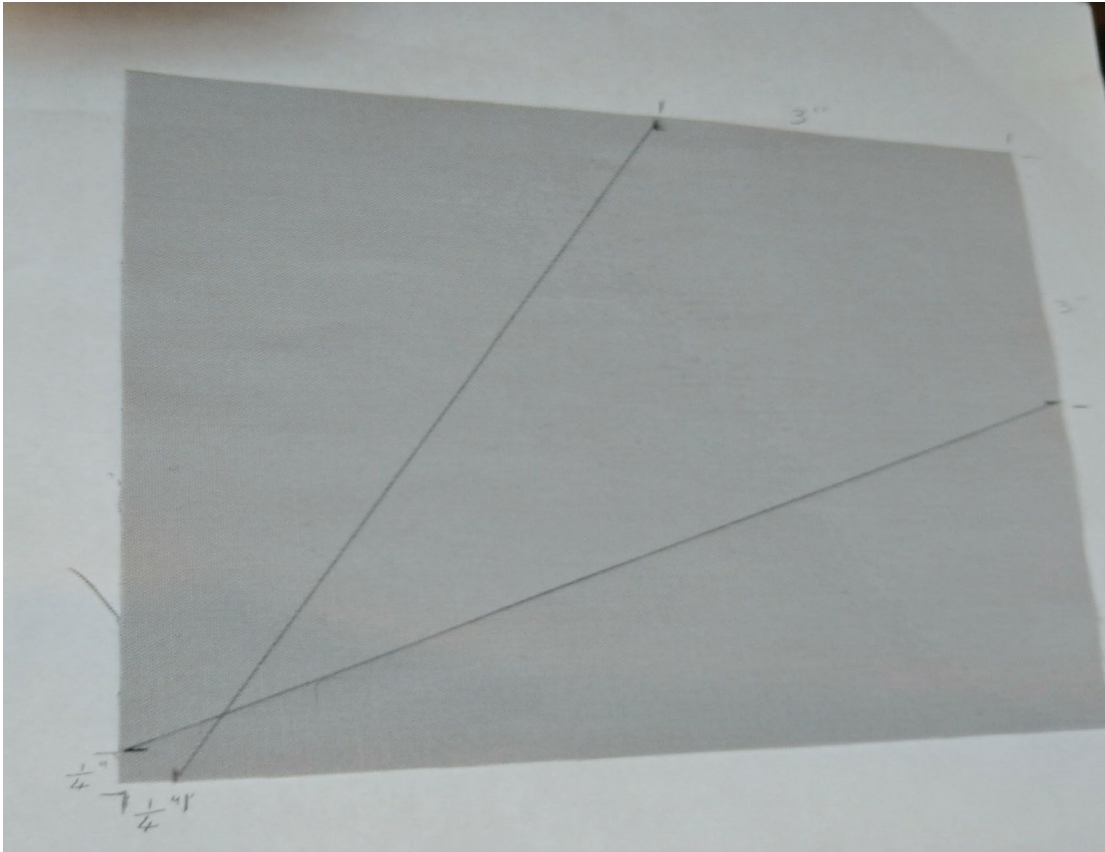
Mark the grey square 3" on both sides from the top right corner on the wrong side of the fabric.

Mark $\frac{1}{4}$ " on both sides from the corner, on the bottom left corner also on the wrong side of the fabric.



Draw a line from the 3" marks to the $\frac{1}{4}$ " marks.

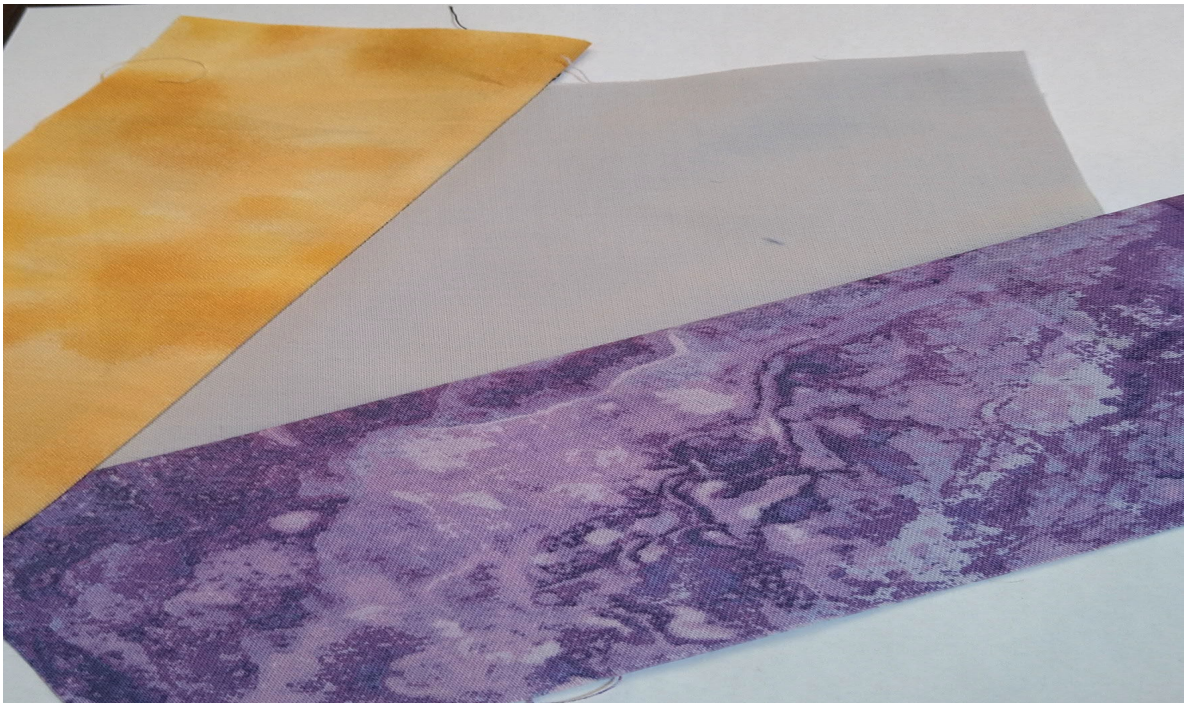
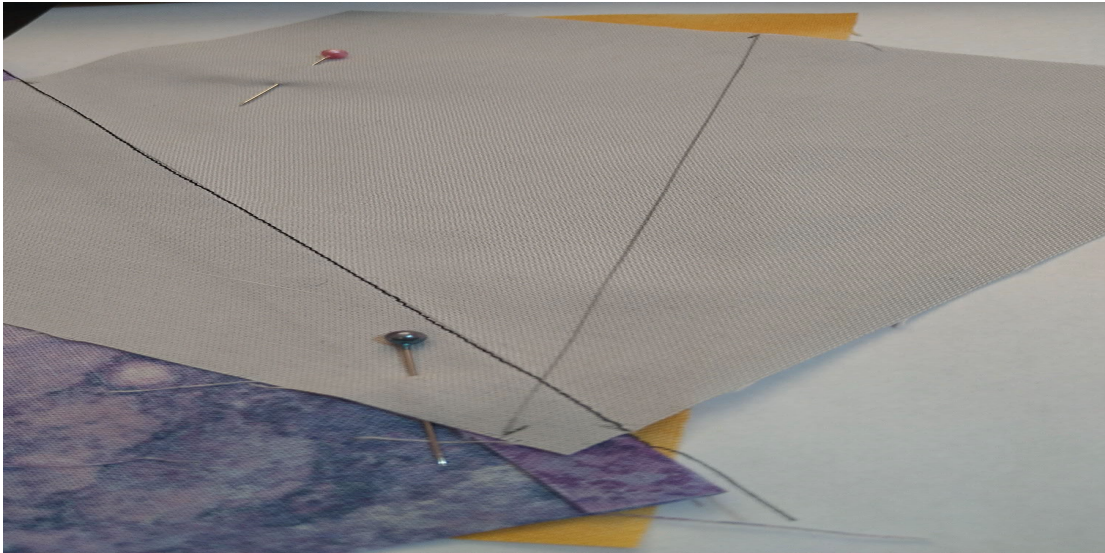




Place a bright rectangle, facing right side up. Place the grey square on top, wrong side up. Place it so it is approximately $\frac{1}{4}$ " over the left-hand line.



Pin in place, away from the line you will be sewing on. Sew on the line. Fold the background square back, towards the pins and trim the seam down to $\frac{1}{4}$ ". Press the colour fabric so it is now right side up and completely covering the corner of the background square. Do the same for the second line.



Now turn over and trim off the excess patterned fabrics, using the background square as a guide. You can use any ruler and line it up along the sides of the square.



The block should measure 6.5" square.



